




Statement of Capability: Carbon Services

Increasing the profitability and
productivity of your land

Carbon Services: Advisory | Planning | Delivery | Registration

We pay respect to the Traditional
Owners of this land and acknowledge
all Elders past and present.



Contents

- 2 About
- 4 Our Team
- 6 Our Capabilities
- 8 Our Approach
- 10 Benefits for your Enterprise
- 12 Case Study
- 14 Contact



Working with you to
create high-value
carbon projects that
are the best fit for you
and your land.



About the Water & Carbon Group

What sets our carbon services apart is our exceptional team of ecological and carbon experts who approach every project with an integrated mindset.

Since its inception in 2007, the Water & Carbon Group (WCG) has been at the forefront of carbon sequestration and environmental restoration.

Integrity and trust:

We're driven to work with integrity on every aspect of our work. Comprising a team who live and breathe our values, who speak your language, and who prioritise the best outcomes for you and your land.

Hands-on experience:

Drawing on extensive experience in reforestation, ecological restoration, carbon modelling, wastewater engineering, and project management, our team has the skills and knowledge to develop quality carbon projects.

Full project services:

We can provide a full range of carbon project services from advisory, planning, delivery, and project registration through to Australian Carbon Credit Unit (ACCU) supply. WCG has experience in a range of accredited carbon methodologies, including:

- Environmental Plantings
- Savannah Fire Management
- Reforestation
- Wastewater Methane Capture
- Human Induced Regeneration (HIR)

Across Australia and the United States, we cater to a diverse clientele spanning landholders, government, water utilities, local councils, industrial clients, and private developers.

By leveraging our expertise and collaborative approach, we aim to create sustainable solutions that make a positive impact on both the environment and your bottom line.

We tailor carbon projects for landowners to diversify income, generate high-value carbon credits, and to create additional environmental and economic benefits.

Our Carbon & Natural Capital Team

Our knowledgeable team works across Australia.





Jim Hunter
Chief Executive Officer

The driving force, founder and CEO of the Water & Carbon Group with more than 30 years' of commercial experience. Jim leads the strategy and growth of WCG, driven by the desire to introduce a new wave of thinking into the agricultural, water, and ecology industries.



Callum Howell
Carbon & Natural Capital Manager

Callum is responsible for developing and managing programs which tackle carbon, biodiversity, and climate change. He has more than 25 years' experience in managing complex projects and operations across Australia and Europe.



Dan Cole
Environmental & Ecological Restoration Manager

As one of the few Certified Ecological Restoration Practitioners in Australia, Dan's impressive knowledge of ecological restoration, horticulture, and reforestation has seen him achieve several awards.



Scott Jardine
Carbon & Natural Capital Technical Lead

With more than 12 years' experience as an agronomist with an extensive background in economics, geospatial design, and agricultural waste management, Scott is highly experienced at improving the accessibility of agronomic and environmental information and data. He is responsible for the geospatial and technical design of carbon farming projects.



Robert McKenzie
Senior Wetland Ecologist Specialist

Rob is responsible for leading the design of wetland, effluent irrigation, and water reuse projects. With more than 20 years' experience working in the field of ecological engineering, he is driven to create solutions with strong long-term benefits.

Our Capabilities

Our dedicated carbon team provides guidance on navigating the carbon market, helping landowners identify carbon project opportunities on their land.

What we offer

We provide end-to-end support for carbon projects. We support you through the project lifecycle, starting from initial feasibility assessments all the way through to project registration, delivery, and issuing of carbon credits.

Professional advisory services:

Providing landholders with guidance on carbon project options.

End-to-end project development:

From the initial planning stage to full delivery.

Expertise in project registration:

Navigating the intricacies of project registration and generation of Australian Carbon Credit Units.

Diverse methodologies:

Well-versed in a range of accredited carbon methodologies, including Environmental Plantings, Savannah Fire Management, Reforestation, Wastewater Methane Capture, and Human Induced Regeneration (HIR).

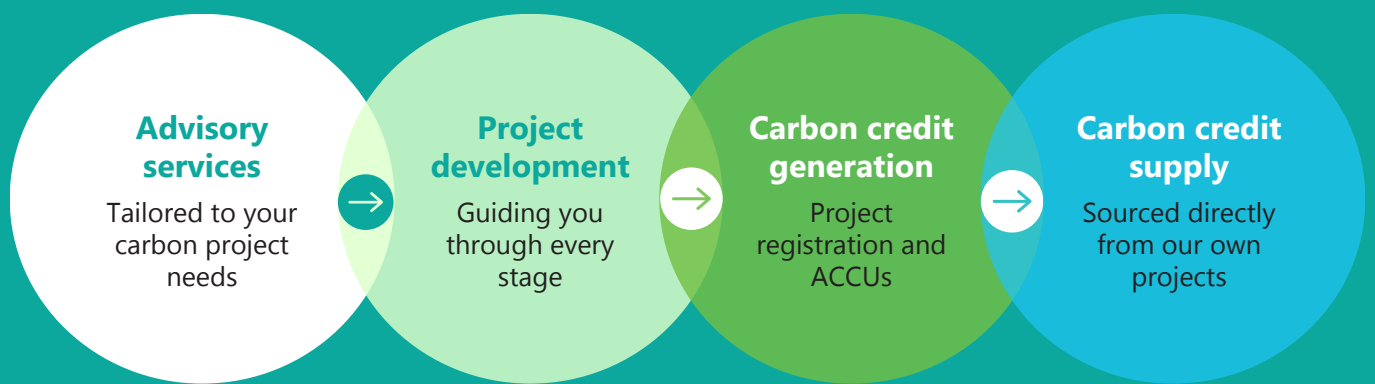
Additional benefits:

Generating positive environmental impacts, such as healthier waterways and increased biodiversity.

Development of natural assets:

Support to establish sustainable, viable and efficient natural asset projects.

Our services extend beyond carbon offsetting. We strive to create comprehensive solutions that contribute to a healthier environment while aligning with your specific goals and values.



Our Approach

We work with you to get you the best outcome.

Collaborating with our expert team in project development can assist you in getting the most out of your land, generating a diversified and robust income through carbon projects.

We pride ourselves on having a deep technical understanding and offering you a customised carbon project.



Advisory as a fee for service



Full range of carbon project services



In-house ecological skillsets



High integrity on-farm projects with additional benefits

Project development process

Desktop assessment:

Review of spatial and technical data to establish feasibility and eligibility.



Site-based assessment:

To ground truth data and site condition to support a high integrity project.



Project design:

To ensure the project performs according to the registration and ensure the security of the claimed ACCUs.



Registration:

Project registered with the Clean Energy Regulator, including all approvals and documentation.



Implementation & reporting:

Project delivery optimised for yield and planting performance, and support for project reporting.



Claim & trade ACCUs:

Claiming ACCUs and identifying options for Carbon Abatement Contracts or secondary market trade.



Benefits For Your Enterprise

Landowners have a unique opportunity to capitalise on the growing carbon market while enhancing the productivity, ecology, and biodiversity of their properties.

The Australian Carbon Credit Unit (ACCU) Scheme

"The ACCU Scheme offers landholders, communities and businesses the opportunity to run projects in Australia that avoid the release of greenhouse gas emissions or remove and sequester carbon from the atmosphere. It is enacted through the Carbon Credits (Carbon Farming Initiative) Act 2011 and the Carbon Credits (Carbon Farming Initiative) Rule 2015.

A number of activities are eligible under the scheme and participants can earn ACCUs. Each ACCU represents one tonne of carbon dioxide equivalent (tCO₂-e) emissions stored or avoided by a project. ACCUs can be sold to generate income, either to the Australian Government through a carbon abatement contract, or to companies and other private buyers in the secondary market."

**Australian Government Clean Energy Regulator,
cleanenergyregulator.gov.au**



What does the ACCU Scheme mean for landowners?

Landowners can participate in the ACCU Scheme by either storing carbon or avoiding emissions from agricultural activities.

Carbon sequestration projects generate abatement by removing carbon dioxide from the atmosphere and storing it as carbon in plants as they grow.

Eligible activities can include:

- reforestation
- revegetation
- restoring rangelands
- protecting native forest or vegetation at risk of clearing

Your land, your benefits

Engaging with us means you can get paid for positive environmental results stemming from land management practices that yield advantages for both your business and the environment.

Our initiatives aim to improve agricultural productivity while sequestering carbon in vegetation and soil, facilitating infrastructure enhancements, managing feral pests, and promoting land regeneration, among other benefits.

By integrating carbon projects into your balance sheet, you create a diversified and resilient income stream.

Case Study:

Riverina Environmental Plantings Design

Inland Slopes/Riverina Region, NSW

The Water & Carbon Group team conducted a comprehensive feasibility assessment and design for an Environmental Plantings project on farmland with a long history of cropping and livestock. Incorporating regional and soil-appropriate Plant Community Types, the planting design used a mix of live stems and direct-seeded trees and shrubs, ensuring a cost-effective, biodiverse, and environmentally sensitive approach to sustainable land use.

Challenges

Historical agricultural practices on the site had left it with limited potential for natural regeneration. Extensive clearing in the region had impacted biodiversity, hindering the establishment of 'biolinks' essential for a healthy ecosystem. Balancing carbon abatement goals with fire risk management was a critical challenge that needed an innovative solution.

Solution

The team conducted both desktop and on-site assessments, employing their in-house expertise in soil analysis to thoroughly interrogate soil health data. They identified amelioration and stratification requirements to achieve the highest yield outcome for the site. The site was stratified according to: soil types, land form groups, land management classes, planting group types, carbon estimation areas, and exclusions to support remnant tree protection, biodiversity, and future co-benefits. The design and implementation plan provided co-benefits which would support biodiversity, cultural, and social outcomes in addition to carbon abatement.

Outcomes

The planting design incorporated a variety of regional and soil-type appropriate plant community types. The design recommended the use of live stems and direct-seeded shrubby under-canopy trees and shrubs to create a cost-effective, biodiverse, and environmentally sensitive planting.

The implementation and management plan was devised in a way to ensure a high level of tree establishment, positive biodiversity outcomes, and minimised risk to business and community assets through fire and pest reduction practices.

The client expressed a high level of satisfaction with our capacity to collaborate with local suppliers and keepers of local knowledge. They commended the team's commitment to maximising project benefits while strategically managing costs and optimising outcomes for both the business and community. This approach ensured economic feasibility without jeopardising the project's viability.

"The team displayed a clear passion for the work they do and this came through in the documentation and design work delivered. We particularly appreciated the team's focus on including as much additional project benefit as possible, whilst devising approaches to control costs, thus optimising project outcomes for the business and community without 'gold plating' and making the project unfeasible from an economic perspective."





the WATER&CARBON
group

The Water & Carbon Group

ABN 17 125 935 855

Level 4, 127 Creek St, Brisbane City 4000

enquiry@waterandcarbon.com

1800 42 62 62 or 07 3211 9997

Callum Howell

Carbon & Natural Capital Manager

c.howell@waterandcarbon.com

waterandcarbon.com